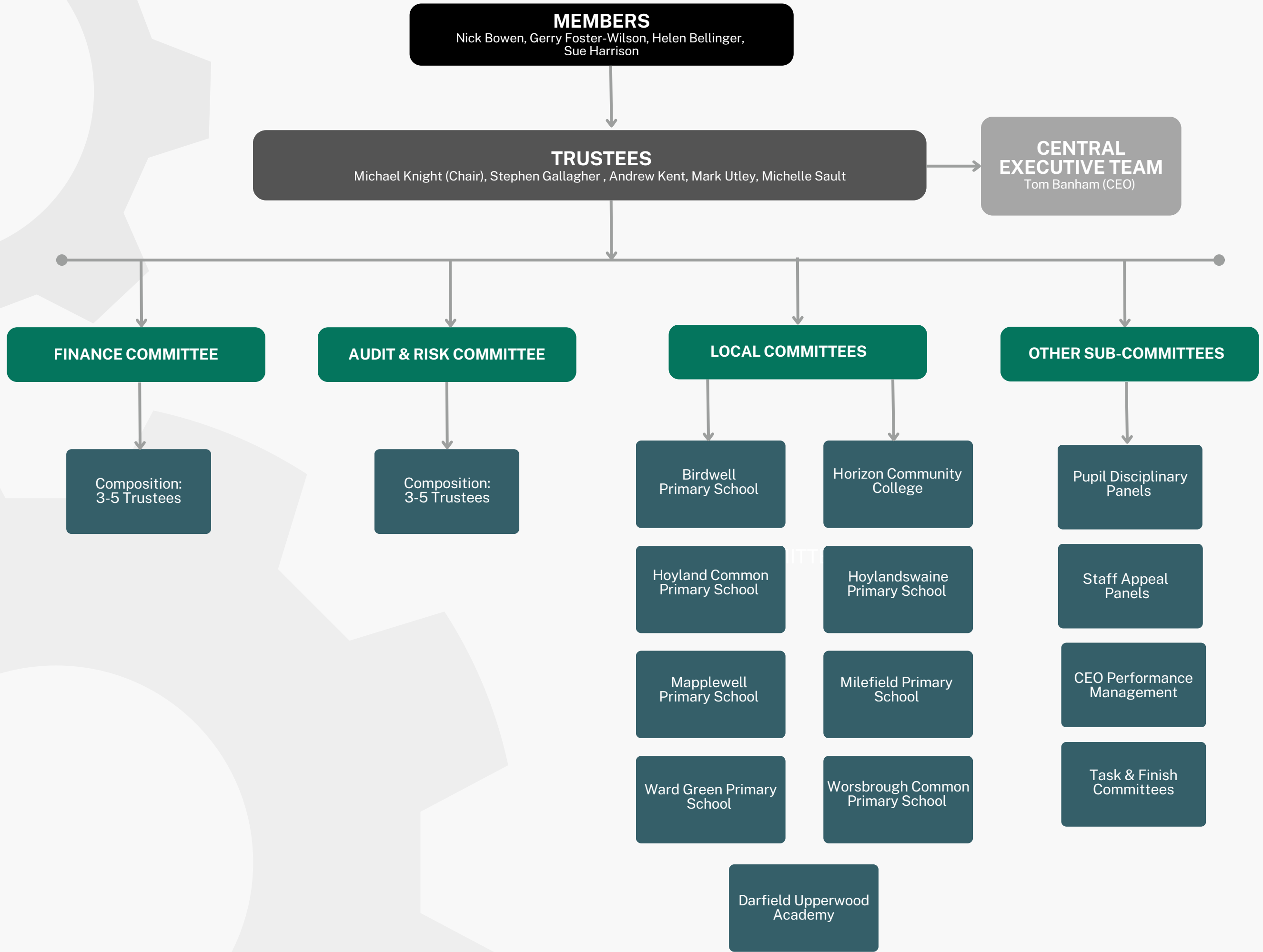




# GOVERNANCE STRUCTURE 2025/26





# MEMBERS

The Members will be made up of 5 appointed persons

## **Nick Bowen**

Nick was formally the Executive Principal at Horizon Community College in Barnsley which opened in September 2012. He was also the Chair of the Barnsley Schools Alliance, working two days a week to support school improvement across the borough. Previously, Nick was a Headteacher in the North East for ten years at St Benet Biscop Business and Enterprise College where he discovered the important role that educational leaders can play in the regeneration of a region.

## **Gerry Foster-Wilson**

Gerry is the Executive Head Teacher at Every Child Matters Academy Trust - Highview Primary Learning Centre, Wombwell Park Street Primary School and Hoyland Springwood Primary School. Gerry is an NLE and also designated lead for Tykes Teaching School Alliance. She has a vast array of experience providing school to school support across the Primary sector supporting schools with a wide range of different needs.

## **Helen Bellinger**

Helen Bellinger is the former Director of Doncaster Research School and now works as an Independent Education Consultant, having over 28 years' experience in teaching, leadership and school improvement roles. She has a proven track record as an Executive Headteacher, System Leader, School Improvement Partner and Consultant, in supporting schools to improve outcomes for pupils.

## **Sue Harrison**

Susan had many years experience as a Deputy Head teacher. She was part of a QCA working party that developed and moderated KS1 Sat questions and tasks and was a LEA SATS moderator for many years. She has previously supported across the borough as a Maths SLE and although now retired from her full time role she continues to provide school targeted support in Key Stage 1, maths, and curriculum development



# TRUSTEES

The Trust Board will be made up of 9 appointed persons

## Michael Knight - Chair

Michael is Chief Information Security Officer at The University of Manchester and brings a wealth of experience in strategic oversight, digital transformation, data, cyber security, change and risk management.

## Mark Utley

Mark is a professional Chartered Management Accountant who specialise in helping organisations across different industry sectors with digital transformation, technological decarbonisation and cyber risk management. Mark will use his extensive experience of corporate governance and risk management to bring value to the academy in support of strategic aims.

## Stephen Gallagher

Stephen has many years governance experience and in the past he has been the Chair of Governors at other schools within the borough. He is a solicitor specialising in employment law. This gives him experience with HR matters, workforce planning, and legal risk management and performance management/improvement.

## Andrew Kent

Andrew is a confident and pro-active leader with extensive experience of managing large-scale projects while devising effective strategic planning and delivering outcomes within timescales and budgets and has extensive experience of working at Board level in educational, health, and voluntary sector organisations.

## Michelle Sault

Michelle is the former headteacher of a specialist biophilic school for pupils aged 11-16 with communication and interaction needs. Experienced in leading mental health initiatives, including contributing to the Department for Education's national rollout. Skilled in inclusive practice, with extensive experience supporting children and young people with social, emotional and mental health needs.

## Gemma Astin-France

Gemma is a Project Director at the Department for Education (DfE), working on condition led School Rebuilding Projects within the departments Education Estates Directorate. She has over 15 years' experience working at the DfE, covering a breadth of responsibilities and remits from school improvement, policy design and implementation, project delivery and crisis management.

## Lesley Bailey

Lesley was formerly a civil servant working in the Department of Education and worked in the Standards and Effectiveness Unit of the government, effecting many changes on the education agenda. Lesley is Education Ambassador for the Prince's Trust and is passionate about supporting students from disadvantaged backgrounds.

VACANCY

VACANCY



# ROLES & RESPONSIBILITIES

