

# Learning Projects- Week 14



Year 3/4

## Ready, steady, SHOP!



The shops are back open and there are some bargains to be had! Explore this week's project and refine your skills on **money, four operations, percentages and time!**



### How much did it cost?

John bought an ice cream and some crisps. The cost of them both together is below on the grid.

£1.85	75p	£1.74	£2.25	£1	£1.56
£2.10	80p	£1.80	£3.06	£1.44	£1.50
£1.60	£1.25	£1.20	90p	£1.45	£1.27

Follow the clues below to find out how much he paid.

1. You need more than three coins to make this amount.
2. There would be change when using the most valuable coin to buy them.
3. The crisps cost more than 50p.
4. You could pay without using any copper coins.
5. The ice cream costs exactly twice as much as the crisps.

[Solution can be found here!](#)

### Enough money?

Nike have a HUGE sale on!



**You have £154 to spend.**

What different combinations could you buy below and stay within your budget?

What's the greatest number of trainers you could buy within budget? The least amount?

If you bought them all what change would you get from £500?

- Black and white: ~~£67.00~~ £40.00
- White: ~~£65.00~~ £34.00
- White: ~~£72.00~~ £34.50
- Pink: ~~£90.00~~ £45.60
- Black: ~~£99.00~~ £61.50

## Weekly Reading Tasks (Aim to do 1 per day)

Can you click on the picture below and have a go the LIRA questions?

**Literal:** Where is the opening of the book set?

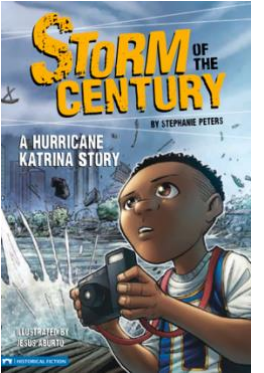
**Literal:** What did Ricky quickly take a picture of?

**Literal:** What did Ricky think was the 'greatest gift of all'?

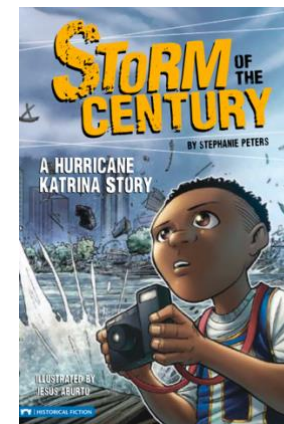
**Inference:** How did Ricky feel about his team losing at half time? How do we know?

**Literal:** What surprised Ricky when he opened the door to go outside?

**Inference:** How do you think Ricky's dad felt about the approaching storm? Can you use evidence to support your inference?



### LIRA



**Inference:** Why was Ricky worried that the city was built below sea level?

**Inference:** How do you think Ricky felt when he realised he couldn't take Bowzer with him?

**Reader Response:** 'He knew he couldn't argue with his mother' What does this suggest about the relationship between Ricky and his mother?

**Author Intent:** Read P18, the author ends the page with the line 'or so they thought' Why has the author done this? What impact does it have on the reader?

### Mystic Meg

Before reading the story can you use the front cover and the blurb to predict what the story may be about? Use evidence to support your predictions.

Once you've read the book, were your predictions correct? What was the same? What was different?



## #HCATReadySteadySHOP

### Closing time?



	July 1 <sup>st</sup> to August 31 <sup>st</sup>	September 1 <sup>st</sup> to June 30 <sup>th</sup>
Monday to Friday	10am – 7pm	closed
Saturday and Sunday	9am – 8pm	1pm – 5pm

- How many hours is the Zoo open on a Saturday in July?
- At what time does the zoo close on Wednesday July 15<sup>th</sup>?
- How many hours is the zoo open over the week?

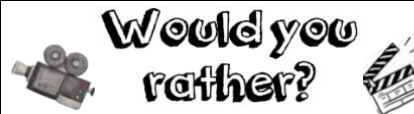
### How long left to wait?

Below are shop opening times.

7.00	Primark
7.55	Nike Outlet
8.00	Smiggle
8.15	M&S
8.25	Boots
8.45	Topshop

- John turns up at 7:54 and wants to visit Boots. How long does he have to wait until it opens?
- How late is he for Primark opening?

### Would you rather?



Look at the options below and think about which you'd rather have.

½ of 46 sweets or 2/3 of 36 sweets

Be given ¼ of £28 or 2/3 of £18

Have 10% off £3 or 20% off £4

Can you make your own video explaining in full which you would rather have!

## Weekly Writing Tasks (Aim to do 1 per day)

### Natural Disasters

Click the picture and choose a natural disaster to research. You can present the information in any way you like. Try to think about how you could use technology to present the information.



You've just been told that in half an hour a huge natural disaster will hit. What do you do? Pick the disaster and explain your actions and thoughts for the 30 minutes leading up to it hitting.



## GRAB BAG

If you had to pack a bag in the event of evacuation what would you pack? Would you need to pack different things in the event of different natural disasters? Would you take anything that is special to you?



