

Learning Project- Week 8

Year 4

Weekly Maths Tasks (Aim to do 1 per day)

Search



Explore a maths concept of your choice on the [myminimaths](http://myminimaths.com) website.

Why not take a look at this website and see if you can work your way through bronze, silver and gold challenges?

Corbettmαths primary

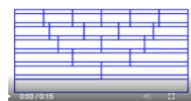
Explore common equivalent fractions.

All about [equivalent fractions](#)- watch this video to get some understanding on how equivalent fractions work.

Try this equivalent fractions [quiz](#) out – make sure you have pen and paper handy in case you need to do any jottings!

Challenge: [Tumbling down!](#)

Watch the video on this website.. can you explain why this happens?



Explore Gareth Metcalf's challenges covering a range of mathematical problems!

Video 1: [Going camping](#)

Video 2: [Consecutive numbers](#)

Video 3: [Spot the difference](#)

Video 4: [Boys, girls and children](#)

Video 5: [Shape puzzles: part 1](#)



Working on Times Table Rockstars - your child will have an individual login to access this (20 mins on garage followed by a sound check (5 minutes).

How many can you score out of 25? Share your score on seesaw and see if you can get as close to 25 as possible!



Weekly Reading Tasks (Aim to do 1 per day)

Can you click on the picture below, download the text and have a go the LIRA questions? (P4 -11)

Literal: What made Amelia different to other girls her age?

Inference: Amelia and her sister are described as 'toyboys' what does this mean?

Literal: How many years older was Amelia than her sister?

Literal: Who would Amelia blame when she got in trouble?

Reader Response: Read page 11, 'Amelia was fearless', can you find evidence in the text to support this statement?

Inference: How do you think Amelia's mum and dad felt about her 'adventurous and fearless attitude'?



Can you click on the picture below and have a go the LIRA questions?



Inference: Read P14 – what sentence suggests Amelia has a good imagination?

Literal: How did Amelia calm her dog down on P16?

Literal: How did Amelia react when she first saw an aeroplane?

Inference: How do you think Amelia felt about women being expected to do certain jobs like becoming a nurse?

Literal: What did Amelia do that grown women never did?

Reader Response: How do you think Amelia felt during her first flight? Can you use information from the text to support your answer?

When Amelia was growing up a lot of jobs were thought to be 'men's jobs' and girls were expected to grow up and do certain jobs like becoming a nurse or a teacher. Is this fair? Have things changed for girls now?

Yes, No, Maybe



SUMMARY

Can you summarise Amelia's childhood? What were her interests? What were her parents like? Was she out-going?

Weekly SPAG Tasks (Aim to do 1 per day)

Can you share your learning on



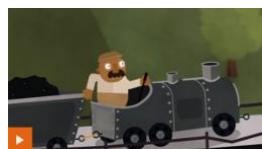
or



?

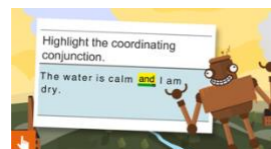
Coordinating conjunctions (learn)

Can you click on the picture below and have a go at the activity?



Coordinating conjunctions (practise)

Can you click on the picture and scroll down to have a go at the activity?



Using inverted commas (apply)

Using your knowledge of Amelia Earhart can you write sentences to describe her using coordinating conjunctions? You could use the ones below.



Can you revise the spelling rules that you have learnt this year using the spelling frame website?

Click on the photo below to access the Y4 spelling rules.



Weekly Writing Tasks (Aim to do 1 per day)

What happened to Amelia?

On the final page it sadly explains how Amelia was never seen again after she set off on a flight with her navigator. What happened to Amelia? Did she survive?

Can you create a story detailing her final hours alive or her miraculous survival!

It takes a very special person to do what Amelia did. What key qualities would someone need to be as successful and ambitious as Amelia?

Can you create a job advert for a pilot during the time Amelia was growing up?

Click the link to find out what is expected of a pilot today...



As I'm sure you're aware Amelia went missing along with her navigator, can you create a missing poster based on Amelia's appearance?



